

SOLUTION BRIEF

GEP SUPPLIER MANAGEMENT

Gain a Competitive Edge with a Comprehensive Supplier
Management Solution



Highlights

- Advanced AI technology & intelligence
- Single interface and point of access for all supplier activities
- Dedicated supplier onboarding support
- Supplier risk & compliance management
- Supplier network with supplier discovery
- Real-time visibility into supplier performance

Establishing an efficient supplier management process is essential for effectively managing an expansive ecosystem of suppliers to derive maximum value and obtain a competitive edge. Manual processes and inadequate supplier management solutions result in increased manual work, escalations and unnecessary risks for organizations.

GEP Supplier Management is the all-inclusive and best-in-class software solution that procurement organizations need to effectively handle supplier data, supplier onboarding and supplier interactions throughout the supplier management lifecycle. It enables businesses to seamlessly navigate the complexities of managing supplier performance, risk, and relationships and tracking to KPIs with enhanced visibility and advanced AI technology.

Mitigate Overall Risks & Increase Regulatory Compliance

GEP Supplier Management oversees adherence to regulatory obligations, including laws related to anti-bribery, anti-corruption, labor and the environment. The software identifies and mitigates business continuity, compliance and regulatory, reputational, financial and other supplier risks. This minimizes the potential for legal and financial liabilities and improves the overall risk management posture of the organization.

Maximize Savings with Improved Supplier Management and Efficiency

With GEP Supplier Management, organizations reduce costs by enhancing their supplier performance, streamlining the supplier selection process, fostering co-innovation for improvement and minimizing their administrative expenses.



The software effectively monitors and evaluates supplier performance to ensure compliance with contractual obligations to deliver high-quality products or services at an apt cost. This results in enhanced supplier performance and increased customer satisfaction through a consistent delivery of quality outcomes.

The solution automates processes and workflows like supplier registration, onboarding and performance monitoring. This reduces the workload on procurement teams and improves process efficiency, leading to cost savings and faster procurement cycles.

Achieve Resiliency and Sustainability with Enhanced Collaboration

GEP Supplier Management facilitates communication, interaction and collaboration between organizations and their suppliers, fostering stronger supplier relationships and enhancing overall supply chain performance. The GEP Multienterprise Collaboration Network empowers organizations to achieve tighter collaboration with suppliers and partners across their entire business network.

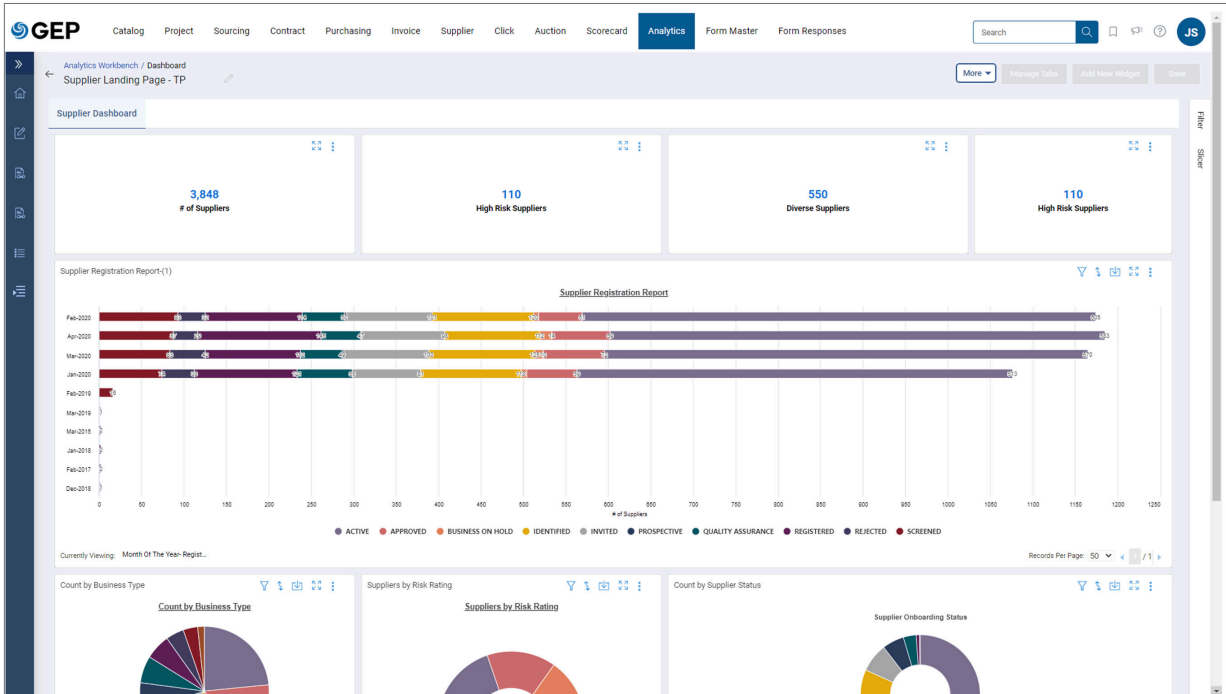
The software enhances supply chain resilience and sustainability through proactive risk management, supplier base diversification, promotion of responsible business practices and continuous monitoring of supplier performance.

Overview of Core Features & Capabilities

GEP Supplier Management is a comprehensive solution that provides the following functions, features and capabilities to improve efficiency, reduce risks and enhance resiliency and sustainability.

Core Functions						
Supplier Information Management	Segmentation & Categorization	Qualification & Onboarding	Performance Management	Risk & Compliance	Relationship Management	Data Analytics & Reporting

Features	
360 Degree Supplier Dashboard	Centralized dashboard to manage supplier relationships. Seamlessly monitor and analyze supplier performance, risks and opportunities in one comprehensive view. Gain visibility, foster collaboration, uncover actionable insights and elevate your supplier management strategies to new heights.
Single Portal and Access for Supplier	Single interface and point of access for all supplier activities — participating in auctions, negotiating contracts, providing quality control data, submitting a survey or accepting purchase orders.
Dedicated Supplier Onboarding Support	Streamline and speed up the onboarding process while minimizing the risk of errors/delays through a dedicated team of experts who manage the supplier onboarding process from start to finish.
ERP Data Synchronization	Seamless integration between software and an organization's ERP systems, ensuring supplier data is synchronized between them.
3rd Party Integration	Enrich internal data with seamless integrations with various types of 3 rd parties to provide supplier intelligence as well as visibility into performance and other potential areas of category risk.
Supplier Performance Monitoring	Monitor supplier performance and implement action plans to meet contracted goals such as diversity, emissions reduction or other sustainability/ESG goals.
AI-Powered Master Data Management	Automatically identify, extract and classify supplier data from various sources; advanced matching algorithms then cleanse, reconcile and merge duplicate or inconsistent data, creating a single, accurate record for each supplier.
Certification Management	Track and manage supplier certifications, ensure suppliers meet necessary standards for doing business and reduce non-compliance risks.
Supplier Network with Supplier Discovery	More efficient information sharing and tighter collaboration with suppliers and partners across your entire business network. Search for new suppliers based on your specific needs, enabling you to achieve operational excellence, mitigate risks and achieve supply chain orchestration.



Supplier dashboard view

The **Supplier Master List** displays 773 suppliers, categorized by status: Identified (2), Invited (79), and GEP Registered (41). The table below shows a sample of the data:

Supplier Name	Supplier Code	Onboarding Status	Legal Address Country	Legal Address City	Primary Email ID	Created By
Blue Drink1	PC-2023.001041	Approved for Direct Vendor + 1 m...			hung.quach@gep.com	Jane
DWK Life Sciences	PC-2023.001069	In Progress for Direct Vendor			ishita.rastogi@gep.com	Terri
LtdCorporation	PC-2023.001070	Approved for Direct Vendor + 1 m...			kaushika.amirishetty@gep.com	Jane
PR Trader	PC-2023.001071	In Progress for Direct Vendor			ypratikraut@gmail.com	Jane
Supplier51102	PC-2023.001067	Approved for Direct Vendor			vivek.patil@gep.com	Jane
Fly Dubai	PC-2023.001038	In Progress for Direct Vendor			Flydubai@Fludubai.com	Jane
H&m Supplier	PC-2023.001027	In Progress for Direct Vendor			swati.ughade@gep.com	Jane
TestSM	PC-2023.001025	In Progress for Direct Vendor + 5 ...			kaushika.amirishetty@gep.com	Jane
Windoor Solutions	PC-2023.001063	In Progress for P2P			shreyash.p@gep.com	Andr
bndemo0910	PC-2023.001060	In Progress for Direct Vendor			abhijeet.alba@gep.com	Jane

Supplier workbench view



GEP delivers transformative supply chain solutions that help global enterprises become more agile and resilient, operate more efficiently and effectively, gain competitive advantage, boost profitability and increase shareholder value.

Fresh thinking, innovative products, unrivaled domain expertise, smart, passionate people — this is how GEP SOFTWARE™, GEP STRATEGY™ and GEP MANAGED SERVICES™ together deliver supply chain solutions of unprecedented scale, power and effectiveness. Our customers are the world's best companies, including hundreds of Fortune 500 and Global 2000 industry leaders who rely on GEP to meet ambitious strategic, financial and operational goals.

A leader in multiple Gartner Magic Quadrants, GEP's cloud-native software and digital business platforms consistently win awards and recognition from industry analysts, research firms and media outlets, including Gartner, Forrester, IDC and Spend Matters. GEP is also regularly ranked a top supply chain consulting and strategy firm, and a leading managed services provider by ALM, Everest Group, NelsonHall, IDC, ISG and HFS, among others.

Headquartered in Clark, New Jersey, GEP has offices and operations centers across Europe, Asia, Africa and the Americas. To learn more, visit www.gep.com.



GEP SMART is an AI-powered, cloud-native software for direct and indirect procurement that offers comprehensive source-to-pay functionality in one user-friendly platform, inclusive of spend analysis, sourcing, contract management, supplier management, procure-to-pay, savings project management and savings tracking, invoicing and other related functionalities.



GEP NEXXE is a unified and comprehensive supply chain platform that provides end-to-end planning, visibility, execution and collaboration capabilities for today's complex, global supply chains.

Built on a foundation of big data, artificial intelligence and machine learning, GEP NEXXE is next-generation software that helps enterprises make supply chain a competitive advantage.

100 Walnut Avenue, Clark, NJ 07066 | P 732.382.6565 | info@gep.com | www.gep.com

Clark, NJ | Chicago | Atlanta | Toronto | Mexico City | San Jose, Costa Rica | Sao Paulo | Dublin | London | Amsterdam | Frankfurt | Prague | Cluj-Napoca, Romania | Pectoria | Mumbai | Hyderabad | Kuala Lumpur | Singapore | Shanghai | Tokyo | Sydney

Copyright © 2023 GEP. All rights reserved.