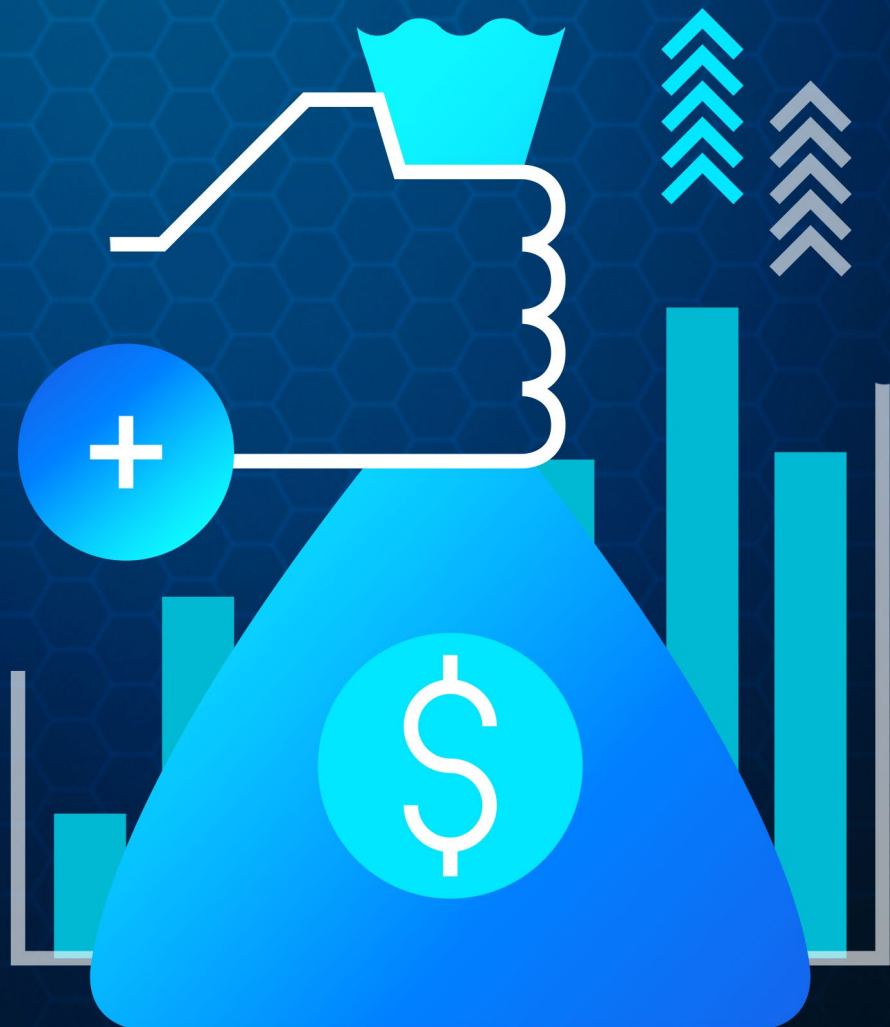


SOLUTION BRIEF

GEP SOURCE-TO-PAY (S2P)

Enabling Strategic Sourcing with Cost Savings, Procurement Optimization and Compliance



Highlights

- Intelligent category management, powered by 100k market indices and a powerful category workbench with 360 visibility
- AI-first, low-code platform allowing for flexible workflows and seamless integration
- Intelligent, configurable and autonomous sourcing capabilities and advanced features to achieve best S2P outcomes
- Streamlined direct procurement and advanced PO, forecast and capacity planning collaboration
- AI-powered comprehensive ESG management to advance sustainability
- Intelligent, with generative AI-based sourcing recommendations, RFx event creation, analysis and summaries
- AI-based what-if analysis for bid optimization and actionable insights
- Generative AI-based contract creation, audit, and risk mitigation in single and batch mode
- Integrated supplier and supply risk management and compliance management, with proactive and optimal third-party risk mitigation actions

When taking a behind-the-scenes look at an organization's operations, source-to-pay (S2P) is extensive and intricate, covering diverse spend management activities such as procurement, financial transactions, legal aspects and its overall expense strategy. Organizations face multiple challenges as they carry out these functions, leading to inefficiency: manual, time-consuming processes, a lack of visibility, an inability to collaborate effectively and compliance issues. Given the comprehensive scope of S2P, there's a great deal of opportunity to enhance efficiency, drive optimization and create value.

Powered by the AI-first, low-code, GEP Quantum platform, the GEP SMART S2P application suite is an intelligent end-to-end procurement software solution that drives strategy and execution at the category level, simplifies procurement processes, speeds up cycle times, increases compliance and delivers cost savings. With the full range of functions that support the entire procurement process, GEP SMART provides powerful category intelligence, direct and indirect material management, and AI-powered insights for decision-making, ultimately enabling supply chain orchestration.

Boost Procurement Efficiency and Save Costs

GEP SMART streamlines and automates S2P processes to enhance procurement efficiency. It eradicates manual responsibilities, diminishes cycle times and enhances overall process visibility and control.

With sophisticated analytics and AI functionalities, GEP SMART easily identifies ways to economize across the entire S2P lifecycle. It empowers companies to engage in improved contract negotiations, enhance supplier relationships, and execute strategic sourcing initiatives, ultimately leading to significant decreases in costs and an increase in savings opportunities.

Business Values

- Supply chain efficiency
- Cost savings
- Compliance and risk management
- Agile and optimal decision-making
- Supplier engagement
- User adoption
- Extensibility and scalability
- Future-proof technology with exceptional ROI

Elevate Compliance and Risk Management and Improve Supplier Management

The GEP S2P platform helps manage compliance with regulatory mandates and mitigate risks. It offers visibility into supplier performance, monitors contracts and invoice compliance, and facilitates effective risk assessment and mitigation strategies.

GEP SMART enhances supplier relationship management by capturing and centralizing supplier data, streamlining communication and enabling cross-boundary collaboration. It helps organizations build stronger supplier partnerships, improve vendor performance through action plans and drive innovation through closer collaboration with suppliers.

Ensure Growth with an Intelligent Future-Ready and Scalable Platform

The GEP S2P platform is designed to scale and adapt to evolving needs. It supports growth and expansion into new markets as well as accommodates changing business requirements. The platform incorporates ongoing advancements in AI and analytics, ensuring future-proof solutions that enable organizations to drive their digital transformation and stay ahead of their competition.



Get Empowered with Data-Driven Decision-Making and Enhanced User Experience

The GEP S2P platform's robust analytics capabilities empowers organizations to make data-driven decisions. The platform provides real-time, comprehensive insights and actionable intelligence, enabling procurement and supply chain teams to forecast more accurately and consistently, identify trends, track performance, foster category management strategy and optimize operations.

GEP SMART's user-friendly interface elevates the experience for procurement professionals, with easy navigation and intuitive workflows. It ensures convenient access to information, simplifies complex processes and offers self-service functionalities, leading to increased user adoption and satisfaction.

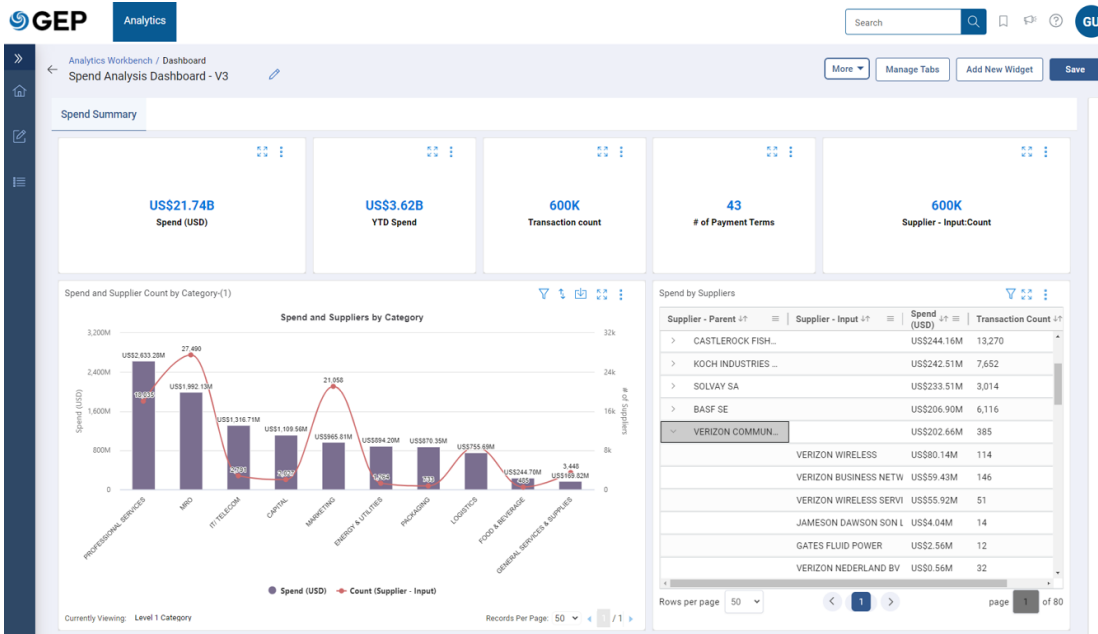
Overview of Core Features & Capabilities

The GEP S2P suite provides a full range of functions, features and capabilities that enable organizations to focus on spend management on one platform, streamlining processes and saving money and time.

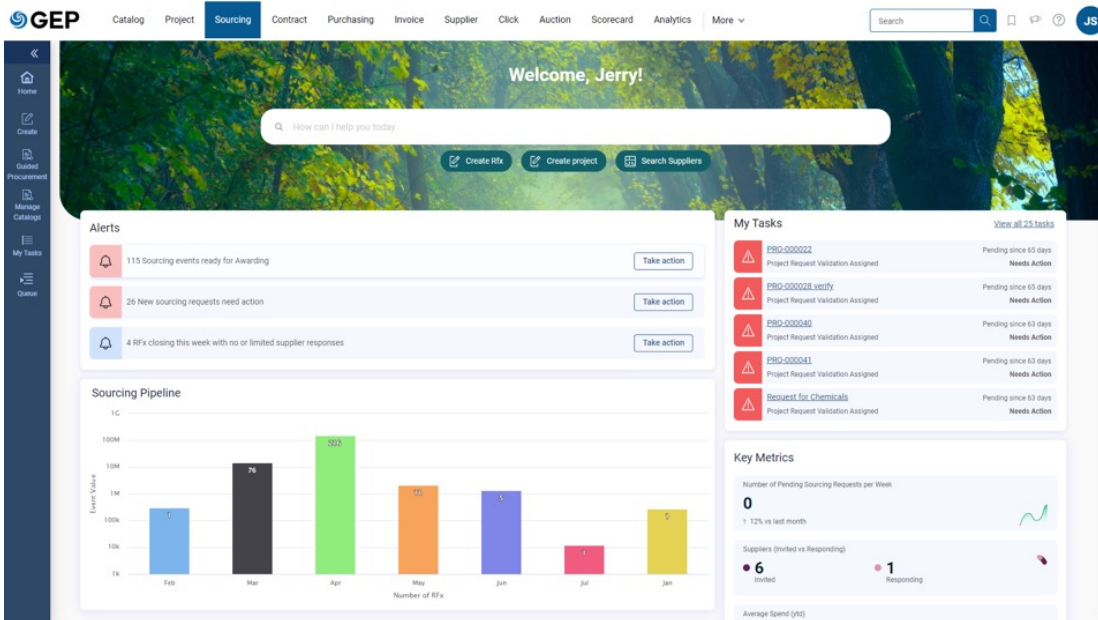
Core Functions						
Intelligent Category Management Governance	Spend Analysis	Sourcing	Contract Management	Supplier Management	Procure-to-Pay	Third-Party Risk Management

Features	
Intelligent Category Management	Manage all category-related activities in one place and gain total enterprise-wide visibility, deep insights with market information, and strategic direction into all your categories throughout the procurement lifecycle. Leverage rich market intelligence, advanced and generative AI capabilities and data aggregation to understand trends, control risks, optimize costs and foster valued supplier relationships.
Strong AI and Advanced Analytics	Practical, scalable and future-proof — the platform incorporates the power of generative AI to enhance its advanced AI and analytics capabilities.
Unified Strong Direct and Indirect Capabilities	Manage direct and indirect in the same system. With advanced functions for BOM, supplier and item MDM, should-cost management, non-purchase items and quality management, GEP offers an efficient way to manage direct materials.
Strong Extensibility, Self-Service and Future-Proof	Through a personalized user experience, create flexible workflows with low-code functionality that allow agile supply chains and strong extensibility. The platform provides seamless connection with other systems through GEP CLICK to cover 100% of features and enables quick adoption of new technologies like AI.
Comprehensive ESG Management	Designed for enterprises to enhance their ESG performance, leverage advanced analytics, machine learning, big data and automation capabilities to enhance the efficiency, effectiveness and agility of ESG management and reporting.
Customer-Centric and User-Empowering Capabilities	Leverage tools for optimizing collaboration and control in S2P processes, like category management, project management and supplier management. The platform offers important services like data cleansing and supplier onboarding and enablement for faster deployment.
Spend Analysis	Collect raw spend data from multiple systems across your organization, classify every dollar spent in the preferred taxonomy and analyze your organization's spend data. Gain insights into spend patterns as well as scope 3 emissions for ESG goals and identify opportunities for cost savings, supplier consolidation and other procurement-related optimizations.

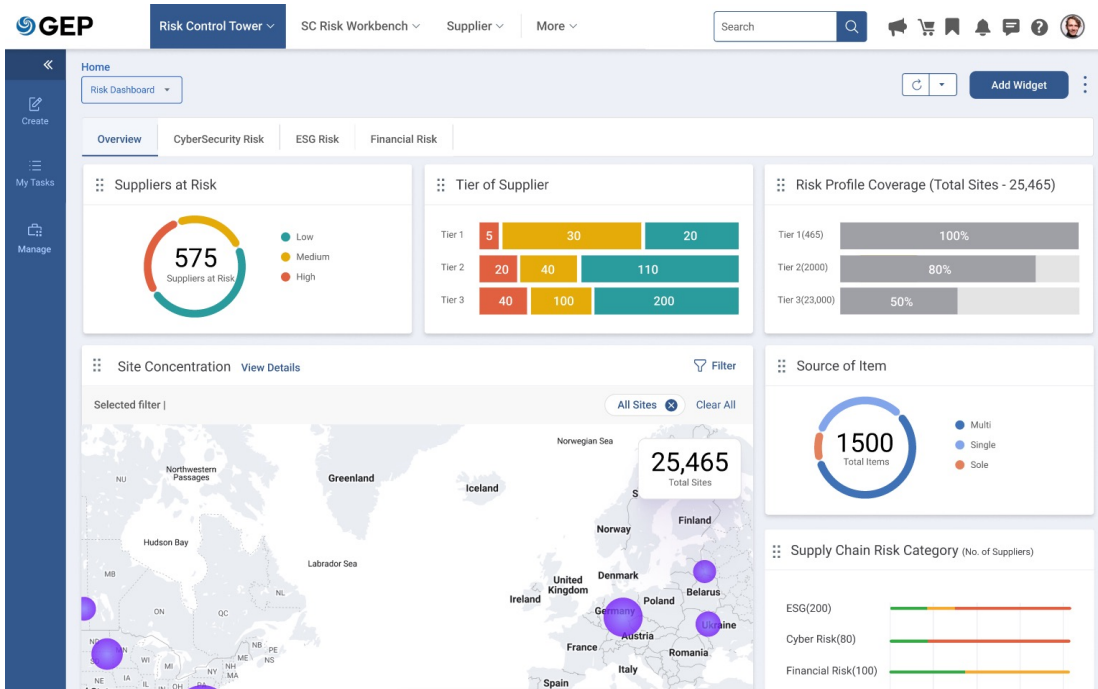
Features	
Powerful Category Capability with Deep Intelligence	Conduct strategic and tactical category management, enabled by the suite's sophisticated advanced category spend analytics, team of SMEs who bring decades of procurement experience, sophisticated category workbench with 100k+ market indices, supplier intelligence, and should-cost management.
Sourcing	Streamline supplier selection by enabling easy collaboration across geographies and functions that support both direct and indirect sourcing needs, RFX management, reverse auctions, supplier and contract management, ESG requirements, analytics and reporting. Identify the right suppliers, negotiate better contracts and manage relationships more effectively.
Contract Management	Streamline, simplify and automate the entire contracting and contract administration workflow as well as leverage end-to-end, company-wide contract management capabilities — from initial request through ongoing maintenance, monitoring and analysis of performance.
Supplier Management	Through the GEP Multienterprise Collaboration Network, engage in more efficient information sharing and tighter forecast, PO, and capacity planning collaboration with suppliers and partners across your entire business network. Manage supplier information, onboarding, supplier performance, risk and relationships through a streamlined and comprehensive software solution to optimize procurement processes and ensure compliance with supplier agreements.
Procure-to-Pay	Gain end-to-end visibility and control by automating and optimizing the entire procurement process seamlessly across requisition, purchasing, invoicing and payment processes. With persona-based and personalized user experience, GEP SMART enables the user to find what they need intuitively, effortlessly and rapidly, making purchases swift and seamless, akin to a consumer's ideal purchase journey.
Third-Party Risk Management	Effectively assess, monitor and mitigate financial, operational, compliance and reputational risks associated with your third-party relationships through a multidimensional framework, intelligent risk management, automation capabilities and strong collaboration features.
Seamless Data Flow Through One Code Base	Benefit from a uniform coding structure, which enables a consistent look and feel across all functions, real-time end-to-end visibility and collaboration, and data insights and intelligence across S2P using one data model.



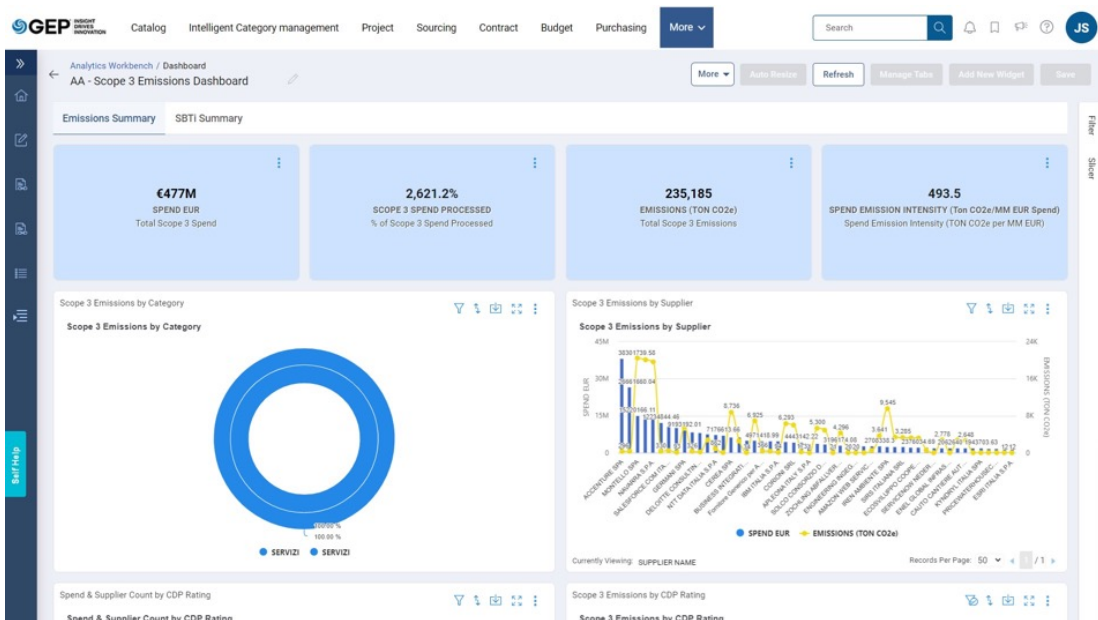
Spend analysis dashboard view



Sourcing dashboard view



Risk dashboard view



Scope 3 emissions dashboard



GEP® delivers AI-powered procurement and supply chain solutions that help global enterprises become more agile and resilient, operate more efficiently and effectively, gain competitive advantage, boost profitability and increase shareholder value.

Fresh thinking, innovative products, unrivaled domain expertise, smart, passionate people — this is how GEP SOFTWARE™, GEP STRATEGY™ and GEP MANAGED SERVICES™ together deliver procurement and supply chain solutions of unprecedented scale, power and effectiveness. Our customers are the world's best companies, including more than 550 Fortune 500 and Global 2000 industry leaders who rely on GEP to meet ambitious strategic, financial and operational goals.

A leader in multiple Gartner Magic Quadrants, GEP's cloud-native software and digital business platforms consistently win awards and recognition from industry analysts, research firms and media outlets, including Gartner, Forrester, IDC, ISG, and Spend Matters.

GEP is also regularly ranked a top procurement and supply chain consulting and strategy firm, and a leading managed services provider by ALM, Everest Group, NelsonHall, IDC, ISG and HFS, among others. Headquartered in Clark, New Jersey, GEP has offices and operations centers across Europe, Asia, Africa and the Americas. To learn more, visit www.gep.com.

GEP SMART®

GEP SMART is an AI-powered, cloud-native software for direct and indirect procurement that offers comprehensive source-to-pay functionality in one user-friendly platform, inclusive of spend analysis, sourcing, contract management, supplier management, procure-to-pay, savings project management and savings tracking, invoicing and other related functionalities.

GEP NEXXE®

GEP NEXXE is a unified and comprehensive supply chain platform that provides end-to-end planning, visibility, execution and collaboration capabilities for today's complex, global supply chains.

Built on a foundation of big data, artificial intelligence and machine learning, GEP NEXXE is next-generation software that helps enterprises make supply chain a competitive advantage.

100 Walnut Avenue, Clark, NJ 07066 | P 732.382.6565 | info@gep.com | www.gep.com

Clark, NJ | Chicago | Atlanta | Toronto | Mexico City | San José, Costa Rica | São Paulo | Dublin | London
Amsterdam | Frankfurt | Prague | Cluj-Napoca, Romania | Pretoria | Mumbai | Hyderabad | Coimbatore
Kuala Lumpur | Singapore | Surabaya, Indonesia | Shanghai | Dalian | Tokyo | Sydney

Copyright © 2024 GEP. All rights reserved.